



iPF5100

Quick Product Overview



A 12-COLOR INK SET WITH LUCIA™ INKS

- Wider, more dynamic color space
- Formulated to reduce graininess
- Optimizes print quality across a wide variety of media
- Formulated to
 - Reduce graininess
 - Minimize bronzing
 - Increase durability
 - Resist scratching

ULTRA-HIGH QUALITY IMAGING

- High-resolution output up to 2400 x 1200 dpi
- Precise 4pl droplet of ink



LUCIA Pigment Inks



Photo credit: ©Stephen Eastwood

BUILT-IN CALIBRATION

- A built-in calibration feature helps to maintain consistently superior results
- Automatic sensor readjusts settings based on the media presented to the printer



Dual Print-Head System

HIGH-SPEED OUTPUT

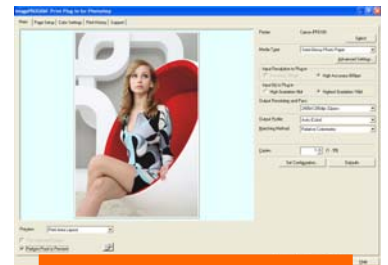
- Two one-inch print-heads, with a total of 30,720 nozzles
- Canon's advanced L-COA Image Processor for faster high-quality output and print optimization



L-COA Image Processor

SOFTWARE SOLUTIONS

- Digital Photo Front-Access
- Print Plug-in for Adobe® Photoshop®
- Print Plug-in for Digital Photo Professional
- PosterArtist 2007 (optional)



Print Plug-In for Photoshop

FEATURES



12-Color LUCIA Ink Set – The imagePROGRAF iPF5100 has a 12-color, pigment-based ink-set featuring red, green and blue inks that allow for prints that are noticeably different than output from the average CMYK printer. Black, Matte Black, Gray and Photo Gray have been reformulated to optimize black ink density for exceptional monochrome output, with reduced bronzing and better ink adhesion for improved scratch resistance.

Built in Calibration - The iPF5100 printer can recalibrate itself to the original optimal factory settings, providing users with an easy solution to achieve consistent and accurate color output from print to print, and machine to machine.

Kyuanos - The iPF5100 achieves uniform high-quality color with Canon's development of *Kyuanos*, a high-precision color management system that delivers consistent and accurate color under different viewing conditions such as fluorescent lights, incandescent lights, or sunlight.

Dual Print Head System – This proprietary technology enables the iPF5100 to print beautiful, high quality photographs at speeds much faster than competitive models.

Unmatched Printing Speeds – The integration of speed and quality is attained with two Canon's strongest and latest technological achievement- the L-COA controller and the dual print head system.

Clogged Nozzle Detection and Compensation – The printer will automatically perform necessary cleaning and if the nozzle remains obstructed, the iPF5100 will reroute ink to other functioning nozzles to compensate for the clog.

Software

Print Plug-in for Adobe® Photoshop® & Digital Photo Professional - These Plug-in's are true export modules, bypassing the operating system's 8-bit restriction, allowing for true 16-bit image processing, producing a much smoother, and more color accurate image. The Plug-in also has advanced monochrome controls, rendering intent settings, ICC profile selection, and much more. The print history function enables users to go back and apply their favorite color, profile and print settings to future jobs.

Printer Driver 2007 – This Windows® and Macintosh® driver incorporates advanced black and white control, simplified page setup options, 1-touch borderless printing, expanded color settings, ICC profile options and much more. Intuitive and easy to operate, yet still gives even the most advanced users the tools needed to stay productive. For Windows users, the free-layout feature enables nesting and custom layouts of images or files of nearly any type.

Digital Photo Front-Access – Designed for editing, laying out and printing photos easily to large format, Canon's newly developed software serves as an excellent utility to import images and provide high quality output. Along with auto image retouching, support for JPEG and RAW images, and simple configuration of print settings, DPFA can easily incorporate your pictures into PosterArtist and Photoshop.

Canon PosterArtist 2007 (Optional, Windows Only) – Developed by Canon, PosterArtist 2007 is an easy to use, template-based poster creation application, designed with the Microsoft® Office™ skill level user in mind. It comes standard with a wide range of pre-designed templates and hi-resolution, royalty-free images.

Printer Width	17"
Printing Technology	Bubble Jet™ (Thermal Inkjet)
Ink Type	LUCIA Ink Set: (12-Color Pigment-based inks) R, G, B, C, PC, M, PM, Y, BK, GY, PGY, MBK.
Max Resolution	2400 x 1200 dpi
Ink Tank Size	130ml
Print Heads	Two, End-user replaceable, PF-03
Droplet Size	4 Picoliter (fixed)
Nozzles	30,720 total, 2,560 nozzles per color
Memory (RAM)	192MB
Standard Interface	USB 2.0 & 10/100-Base T/TX
Optional Interface	IEEE1394 (FireWire Card)
Borderless Printing	All four sides with specified roll sizes and media
Media Thickness	0.08mm – 1.5mm
Driver Software	Windows® (2000, XP, Vista 32/64 bit), Macintosh® (OS9, OS10)
Print Speeds A2 Size**	1.2 minutes*
Included Software	Print Plug-in for Photoshop® and Digital Photo Professional, Printer Driver Extra Kit (Free Layout, imageRUNNER Linking Function), Digital Photo Front-Access

* Print speeds noted here are bench-mark testing results conducted by Canon Inc. Each print time stated here is actual measurement of sample image output speed and is not the maximum printer speed. The data does not include data transfer time. The print speed may vary depending on the data volume and size. The testing conditions are as follows: The print time is measured from the start of printing until the image is exited out from the printer. These tests were conducted with a Pentium®4 3.2GHz running Windows XP, 1GB RAM, USB 2.0, from Adobe® Photoshop 7.0, SCID No.5 (bicycle chart).

** Paper fed from Roll on A2-sized [(410 x 512.5mm)] paper printing at 1200 x 1200 dpi, Standard mode.