

SII 

Teriostar

**LP-1010 MF Series
Digital Wide-Format
Network Copiers**





High Speed 600 dpi Scanning & Printing



HIGH PRODUCTIVITY

3.4 E-size/minute
 6.2 D-size/minute
 Our high-performance controller with simultaneous parallel data processing provides high speed output, even during continuous printing of different sizes.



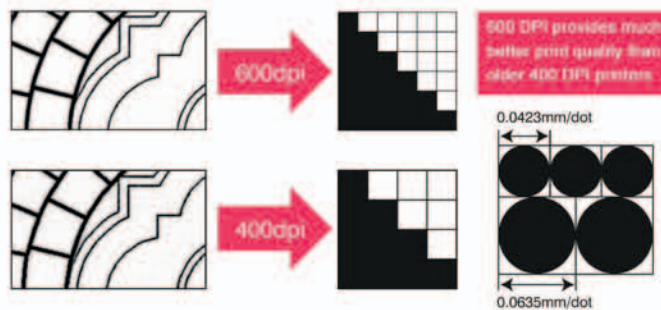
Output Conditions
 Sample Image: AutoCAD Living room A1
 Data size: HP-GL/2 approx. 855kb
 Computer: Celeron 800Mhz, 192MB memory
 OS: Windows 2000 SP3
 Data Transfer: FTP



■ Time required for continuous 5 prints through Ethernet, FTP Transfer

HIGH RESOLUTION 600 DPI

The combination of 600 DPI and a single developer unit delivers superb density and excellent line acuity. Accurate copies and prints to-scale are assured with true 600 dpi printing.



LONG PRINT LENGTHS

Long prints support applications such as automotive, shipbuilding, civil engineering, bridge building, military, and energy/industrial sites.

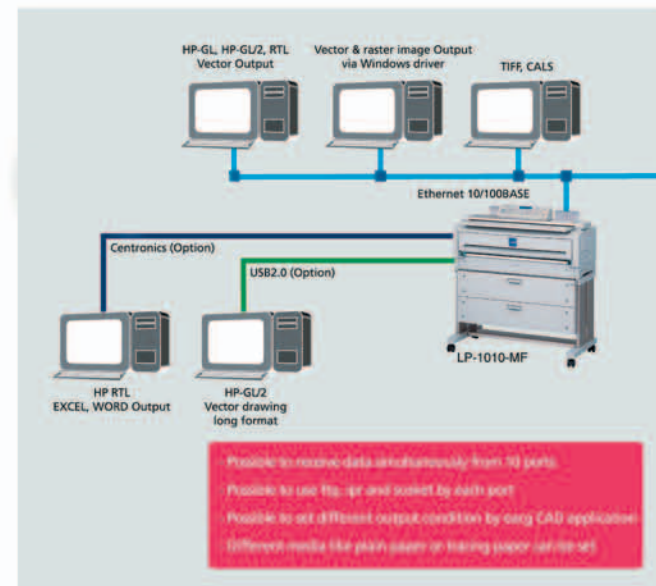


NETWORK INTERFACES

Interfaces supported include Ethernet (100Base-TX and 10Base-T), USB-2 and Centronics. All interfaces can receive data simultaneously.

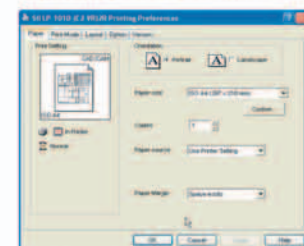
PRINTER LANGUAGE SUPPORT

Compatible with HP-GL, HP-GL/2, HP-RTL, TIFF, and CALS.

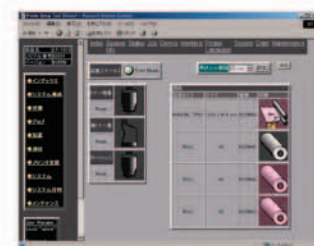


WINDOWS DRIVER

Includes a Windows driver that allows you to print from any application.



Windows Driver



Web Control

WEB-BASED PRINTER CONTROL

Full printer control over the network using a standard web browser. Set up passwords for different levels of access and control

600 DPI COPIES

High resolution scanning and copying is fast and easy - enlarge or reduce drawings while retaining quality. Scale from 25% to 400%.

AUTOMATIC ROLL SELECTION

Choose between two different paper sizes, or let the LP-1010 automatically select the appropriate paper size for your drawing.

EASY-TO-USE LARGE DISPLAY

The LP-1010 offers a large display which provides excellent visibility and easy operation of the entire copier. Allows you to change parameters quickly. Store up to 10 user-settings in memory.



USER-REPLACEABLE DRUM - LOWER SERVICE COSTS

The industry's first easy-to-replace photo cartridge drum in a wide-format LED printer allows you to replace your own photo drum - no service call required - just like a desktop laser printer! This dramatically lowers your ownership costs, lowers cost-per-copy costs, and reduces downtime.

CLEAN & EASY TONER REPLACEMENT

Toner cartridges use a containment system that prevents accidental toner spills - fast, easy, and clean.

Fast Copy Speed

3 E-size Copies/min.
 6 D-Size Copies/min.

UP TO 20 CONTINUOUS COPIES

Make up to 20 continuous copies, or make an additional copy from a previous scanned drawing. Enlarge, reduce, change the density, or # of copies.

DIGITAL SORTING

Copy different size drawings and automatically print them out the same size, or collate multiple copies.

SCAN-TO-FILE

Instead of copying, you can scan directly to a file for offline use or for archiving drawings.





LP-1010 MF Series Digital Wide-Format Network Copiers



Specification		LED Copier LP-1010 MF
		Electrophotography (LED Exposure/Dry Type Development(One Component)/OPC Drum)
Plotter	Imaging Method	
	Output Resolution	600 dpi
	Continuous Output Speed	3.4 E-size prints per min., 6.2 D-size prints per min.
	Warming-up Time	less than 8 min.
	Paper Feed	2-rolls, Automatic Feed
	Paper Ejection	Front Side Ejection
	Maximum Output Width (*1)	36"
	Maximum Output Length (*2)	33 feet
	Margin Sizes	1/8" on right/left side, 1/5" on front side, 1/2" on rear side
	Maximum Output Area	36 inches x 33 feet
Controller	RAM (*3)	256MB (Standard)
	HDD	20 GB
	Interface	Ethernet (10/100 Base-TX), USB 2.0, Centronics
	Network Protocol	TCP/IP (ftp, lpr, socket)
	Data Format	HP-GL, HP-GL/2, HP RTL, TIFF, CALS
	Logical Port	10
	Web Function	o
	Dimensions	Plotter 46" (W) x 22" (D) x 49" (H)
Scanner	Scanning Speed	2.36"/sec.
	Scanning Resolution	600 dpi
	Maximum Scanning Width	Maximum 36"/Minimum 8.25"
	Maximum Scanning Length	33 feet (*3)
	Interface	Ethernet (Shared with Plotter)
	Delivery Function	Allows to Preview Function By BACK Function
Other	Weight	less than 463 lbs. (*4)
	Power Supply	110V Model: 120V-15A, 220V Model: 230V-10A
	Power Consumption	Operation: less than 1,350W, Standby: less than 60W

*1: There may be some limitation of paper type *2: Limited by resolution/memory available *3: Actual capacity is less *4: Without packaging

Standard Accessories

Power Cord, 3 Toner Cartridges, 1 Waste Toner Bottle, Paper Flange (for each roll holder),
Installation CD-ROM (Windows Driver, Plot Share One LT, Manual), User Manual,
Media (Paper: 100' roll, A0/A1/A3 size, 1 each)



EnergyStar Compliant Product

- Ethernet is a registered trademark of Xerox®
- HP-GL, HP-GL/2, and HP RTL are graphic languages developed by Hewlett-Packard Company.
- All other company names and products names are trademarks or registered trademarks of their respective companies.
- The brochure may be subject to change without prior notice.



Seiko I Infotech Inc.

2060 Wineridge Place, Suite A&B
Escondido, CA 92029
TEL: 760-781-5200
FAX: 760-745-1195

www.seiko-i.com



ISO9001 Certified