

**WIDE FORMAT
DIGITAL IMAGING SYSTEM**

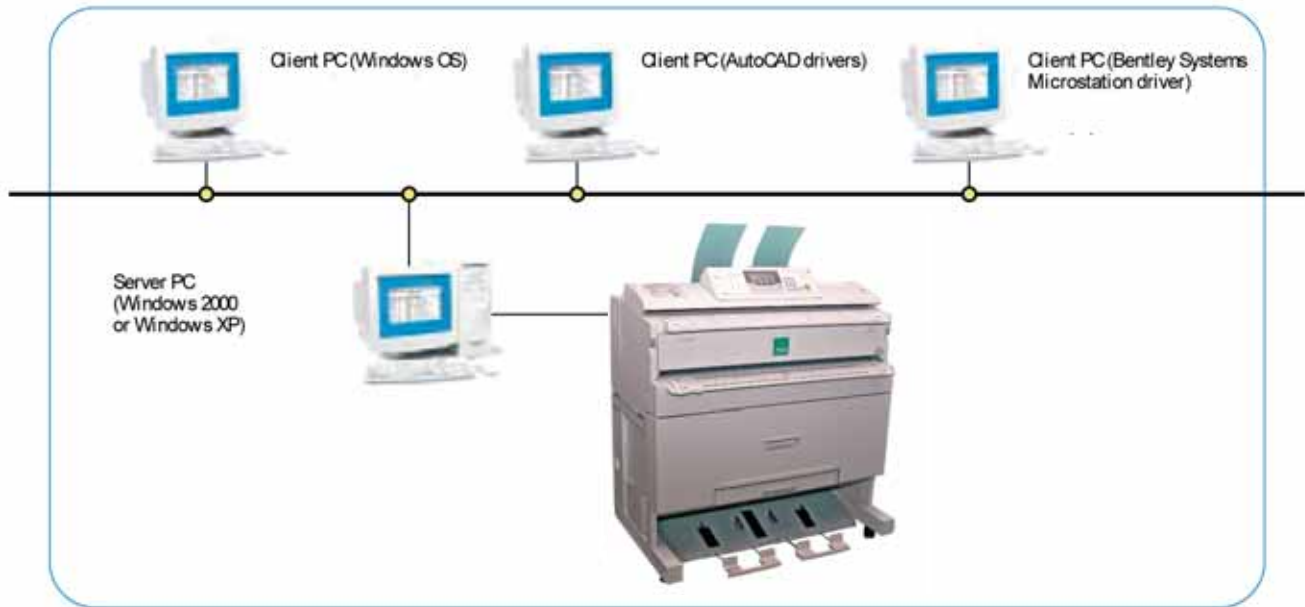
GEI 2900

2900



GEITM

ROBUST, VERSATILE PRINTING AND SCANNING WITH THE OPTIONAL CONTROLLER



NETWORKING

- **PLOTCLIENT WIN:** for CAD users to create and send print jobs from their workstations.
- **WINPRINT:** print drivers for Windows 95/98, NT4.0 2000, ME and XP for printing from any Microsoft Windows application.
- **HDI/ADI:** drivers for printing from AutoCAD 13/14, 2000/2000i, LT2000/LT2000i, 2004/2004LT, 2005/2005LT and 2006/2006LT.
- **PLOTCLIENT WEB:** for creating and sending print jobs via the intranet or internet.

Today's technology-based work environments demand electronic document storage to save precious space and eliminate document retrieval delays and difficulties. The ability to scan originals to storage improves document portability, security and ease of editing.

With the addition of the SCANTOOL option, the GEI 2900 can scan original documents for editing, revising, printing and digital storage. Scanning speed is up to 4 pages per minute with a resolution of 200 dpi.

SCANTOOL scans documents to a variety of raster file formats including single and multi-page TIFFs and Adobe® PDF files.

**THE GEI 2900:
DELIVERING
BIG FEATURES
TO
LOWER-
VOLUME
WIDE FORMAT
USERS**

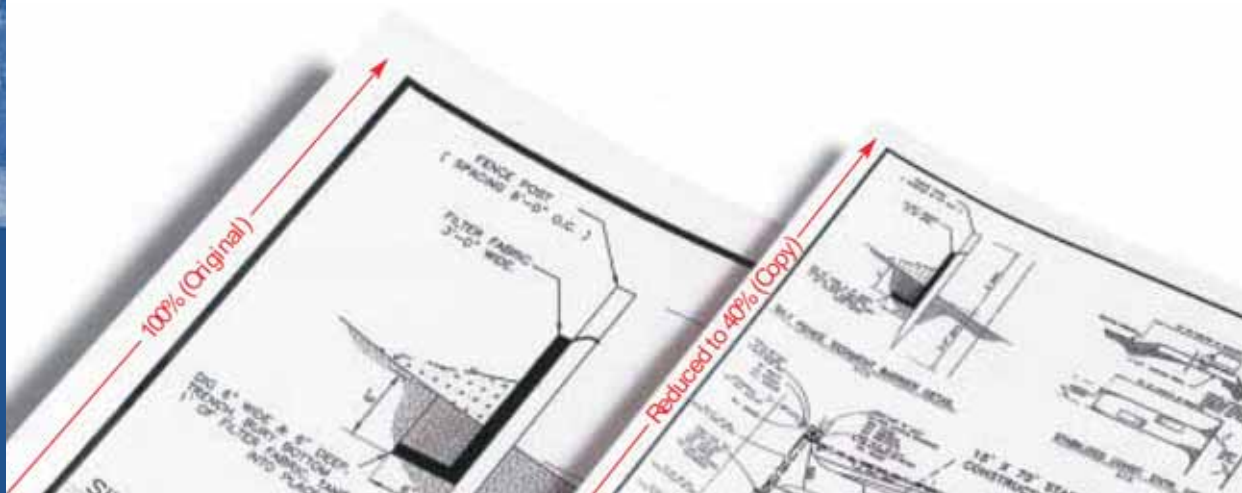
2900

The GEI 2900 System is a compact, "all-in-one"—copy, print and scan—wide format digital imaging system designed specifically for lower-volume users. It sets a new standard for small footprint, affordability, superior image quality and flexibility in a wide format system.

Architects, engineers, commercial and corporate workgroups, and government agencies that don't need large, high volume systems can now achieve unsurpassed productivity and flexibility with the GEI 2900. It can fit the budget, the space and the performance needs of virtually any size architectural or engineering group.



**THE AFFORDABLE SOLUTION FOR LOW-VOLUME
WIDE FORMAT COPYING, PRINTING AND SCANNING**



THE GEI 2900 WIDE FORMAT DIGITAL SYSTEM DOES IT ALL

Offers substantial advantages for wide format users in a variety of office environments, large or small.

- An excellent replacement for an aging analog copier. Less costly to maintain, the GEI 2900 offers more of the performance features most valued by wide format users.
- Many times faster, more versatile and more economical than an ink jet plotter, and it adds the value of having both copying and scanning functions.
- Cleaner and more versatile than the diazo process.
- More economical and much more convenient alternative to outsourcing document reproduction to copy and print shops.
- The GEI 2900 and its GEI 2900 Controller makes this an excellent workgroup printing system that can either replace or augment centrally located mid- to high-volume systems. By reducing the long walk time to pickup and retrieve documents, it improves workgroup efficiency.
- The GEI 2900 operating panel is easy to read and operate. The panel's LED screen easily guides users through the control of even the most complex commands.

THE GEI 2900 DELIVERS TOP DIGITAL PERFORMANCE THAT CAN REALLY MAKE A DIFFERENCE

AS A COPIER:

- The GEI 2900 is easy to use and outperforms many larger wide format copier/printers.
- The GEI 2900 delivers truly superior images. Its 600 dpi resolution produces sharp lines, details and fills.



- With its 256-grayscale levels, it keeps shading faithful. The GEI 2900 also enables users to fine-tune copies. By selecting the nature of the original — Text/Photo, Photo, Drawing, or Special —the GEI 2900 automatically adjusts image quality for each specific original type.
- The GEI 2900 can be configured in several different ways. The basic GEI 2900 configuration is an optional table that allows manual feeding of cut sheet paper. Or, it can be configured with an optional 500 foot paper roll tray table or a two-roll tray table, either of which can have an optional paper cassette tray added for automatic feeding of cut sheets up to 12" x 18". Changing paper rolls is simple and easy. The roll-changing system features light-weight flange inserts for no-hassle roll changes.
- The GEI 2900 features two output trays. A space-saving upper output tray holds up to 25 sheets vertically at the top of the unit. An additional 20-sheet paper stacker tray drops copies out the back, down to the front and bottom of the unit.



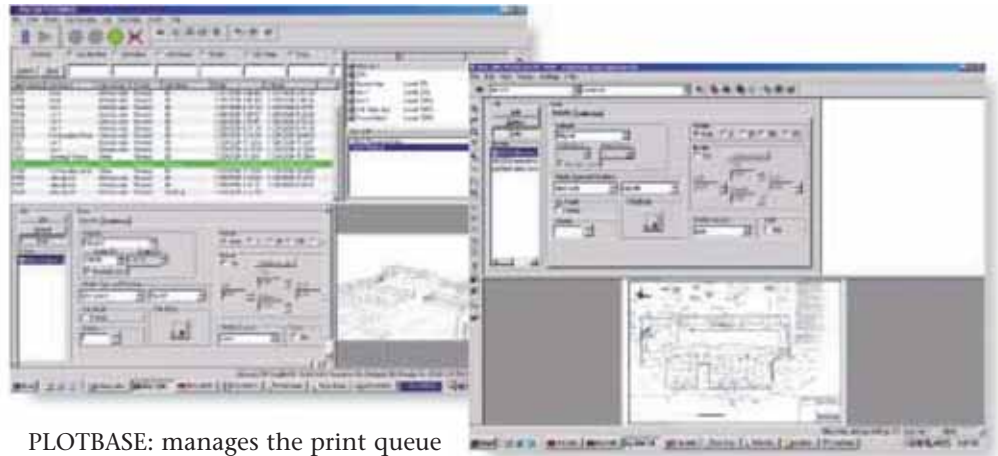
Easy to change paper at three automatic-feed sources

AS A PRINTER:

- Printing directly from a CAD workstation to the GEI 2900 with the GEI 2900 Controller is fast and document production couldn't be easier. From the CAD workstation, more than two dozen tasks can be requested and managed, including multiple and collated sets, media selection, magnification, image rotation, border setting, account tracking, sample print and stamp printing. Now you can just click from your workstation and create multiple sets of copies quickly and efficiently. No more printing a single set on the pen plotter and then physically carrying the printed output to the copier to make multiple copies.

AS A SCANNER:

- The GEI 2900 with the GEI 2900 Controller Scan option maintains drawings and plans in space-saving digital file format on hard drives, so users can burn to a CD or store in virtually any network archiving system. Newly produced documents no longer need to be stored in space-consuming filing drawers and cabinets. Aging legacy documents can be scanned and saved as digital files, reducing the need for filing space and retaining deteriorating paper documents.



PLOTBASE: manages the print queue

PLOTCLIENT Win: creates and sends print jobs to PLOTBASE

- With electronic storage, retrieval time for existing documents is shortened. Documents can be pulled up, examined on the GEI 2900 controller screen, edited, shared on a network or printed out. It's even possible to edit images, extracting and adding new elements as desired. PDF scans can be attached in emails and sent anywhere in the world via intra/Internet, saving expensive mail or delivery costs.

IMPORTANT DIGITAL ADVANTAGES WIDE FORMAT USERS DEMAND

- The outstanding digital capabilities of the GEI 2900 system enable users to benefit from many different types of timesaving, high-productivity features. A complete list is provided in the specifications; a representative few are described below:
- Collated Sets: The GEI 2900 can copy or print complete collated document sets. Sequentially ordered sets can also be rotated and delivered to either output tray in perfect collated order.
- Several Reduction/Enlargement Choices: Reduce and enlarge documents using preset values, specified ratios, auto R/E, directional magnification, and zoom for engineering and architectural applications...in feet and inches OR metric units.
- Stamping: The GEI 2900 offers optional stamping possibilities.
- Date, page number, and virtually any type of preset stored stamp can be placed in any position and orientation on the page.
- Positive/negative reverse, job preset and features such as overlay, erase, margin adjustment, and double copy make the GEI 2900 even more powerful and versatile.

WIDE FORMAT DIGITAL IMAGING SYSTEM

GEI 2900



A Visual Edge Technology Company

Contact us...

For more information about the solutions and services we provide visit us on the web at www.geiworldwide.com or call us
(800) 321-9874 Corporate
(800) 842-8448 Service & Supplies Hotline
(866) GEI-WIDE Fax
434-9433



Worldwide Headquarters
Graphic Enterprises, Inc.
3874 Highland Park NW
North Canton, OH 44720



GEI West Coast Operations
Graphic Enterprises, Inc.
10825 Shoemaker Ave
Santa Fe Springs, CA 90670

www.geiworldwide.com

GEI Item # 884

